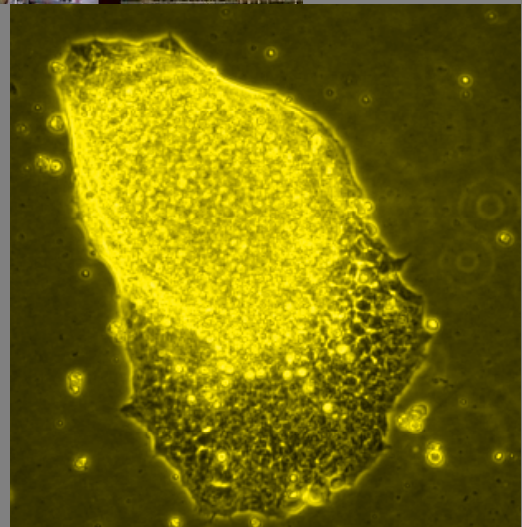




Date: **Sunday, August 26, 2007**

Venue: **Kyoto-TERRSA**

East Building 2F (Seminar Rooms No.2 & 3)
Shinmachi Kujo Minami-ku, Kyoto, Japan
(about 1km from Shinkansen Kyoto Station)



WC6-Kyoto Satellite Symposium

"New Bioscience for 3Rs Research"

<http://wwwsoc.nii.ac.jp/jsaae/kyoto/>

Welcome!

Highlight

Special Lecture

**Beginning of the Alternative research in Japan:
Reminding the past and expecting the future**

Tsutomu Sugahara (The Japan Health Foundation, Kyoto, Japan)

**The contribution of the new European Chemicals Policy REACH
to the development of Alternative Methods in Toxicology**

Horst Spielmann (ZEBET, German Center for Documentation and Validation of Alternatives to Animal Experiments, at the BfR, the Federal Institute for Risk Assessment, Berlin, Germany)

The Zero Option Project: Moving away from a reliance on animal testing

Andrew N Rowan & Martin L Stephens (HSUS, Washington, DC, USA)

FREE CHARGE!

Dear Colleagues,

The city of Kyoto has inherited a superb history of tradition and culture established over countless generations. It is also constantly creating new forms of culture and industry with its progressive and revolutionary spirit. Kyoto is globally renowned in the field of environmental protection thanks to the "Kyoto protocol." We are especially focusing our efforts on establishing new 3Rs technology and working in the most important areas.

Koichi Imai

Organizers:

Koichi Imai (Osaka Dental University)

Tsutomu Miki Kurosawa (Osaka University)

9:00 Registration

9:15 Welcome address by K.Imai and T.M.Kurosawa

9:20 Symposium 1 Challenging to 3Rs by New *in vitro* Technology

9:20-9:35

TESTLIVER™ have Much Potential as a Useful Tool for Drug Discovery
Taku Arakawa (TOYOBO Co., Ltd., Japan)

9:35-9:50

The Potential of Cultured Human Tissue induced by Tissue Engineering Technology
Ken-ichiro Hata (Director R&D, Japan Tissue Engineering Co., Ltd., Japan)

9:50-10:05

Novel Methods of Drug Screening using Multi-Electrode Recording System
(MED system)
Ken Shimono¹, Akira Shimizu², Rika Yamazaki², Hideyasu Jiko²
(¹ Advanced Technology Research Lab., Matsushita Electric Industrial Co., Ltd.,
² Alpha MED Sciences Co., Ltd., Japan)

10:05-10:20

PuraMatrix™: 3-D Cell Culture System for Alternative Test Methods
Jiro Takei (3-DMatrix Japan, Ltd., Japan)

10:25 Symposium 2 Three-dimensional Cultured Skin Model

10:25-10:40

Development and Evaluation of the Vitrolife-Skin™, a Three-dimensional Cultured
Skin Model
Noriyuki Morikawa (Research & Development Center, GUNZE Ltd., Japan)

10:40-10:55

SkinEthic Laboratories, a Devoted Company to Develop and Produce *in vitro*
Alternative Methods to the Animal Use
Anne de Brugerolle (SkinEthic Laboratories, Nice, France)

10:55-11:10

EpiDerm Skin Corrosion Test: Evidence of Long Term Reproducibility and Reliability
for a Regulatory Accepted Method
Mitchell Klausner (MatTek Corporation, Ashland, MA, USA)

11:20 - 12:00 Special Lecture

The contribution of the new European Chemicals Policy REACH to the development
of Alternative Methods in Toxicology
Horst Spielmann (ZEBET, German Center for Documentation and Validation of
Alternatives to Animal Experiments, at the BfR, the Federal Institute for Risk
Assessment, Berlin, Germany)

12:00 - 13:00 Lunch

13:00 - 13:15 Speial Memorial Lecture

Beginning of the Alternative Research in Japan: Reminding the Past and Expecting
the Future
Tsutomu Sugahara (The Japan Health Foundation, Kyoto, Japan)

13:15 - 13:40 Special Lecture

The Zero Option Project: Moving Away from a Reliance on Animal Testing
Andrew N Rowan & Martin L Stephens (HSUS, Washington, DC, USA)

13:45 Closing remark

Program

Registration:

In the case of 6WC registrant,

non-registration attendance of this symposium is also welcomed

Official Languages: English and Japanese

Contact

e-mail: imai@cc.osaka-dent.ac.jp

Official Website:

<http://www.soc.nii.ac.jp/jsaae/kyoto>

Kyoto-TERRSA

(Kyoto Citizen's Amenity Plaza)

Address: Shinmachi Kujo Minami-ku, Kyoto, JAPAN

tel:+81-75-692-3400 fax:+81-075-692-3402

SHINKANSEN (TOKYO <--> KYOTO)

Central Japan Railway Company (Map, Timetable)

<http://jr-central.co.jp/eng.nsf>

West Japan Railway

<http://www.westjr.co.jp/english/global.html>

Japan Rail Pass

<http://www.japanrailpass.net/>

KYOTO --> KANSAI INTERNATIONAL AIRPORT

Kyoto to KIX ("Airport Express:HARUKA" 73min)

<http://www.westjr.co.jp/english/travel/kix/index.html>

KANSAI INTERNATIONAL AIRPORT (KIX)

<http://www.kansai-airport.or.jp/en/index.asp>

KYOTO INFO.

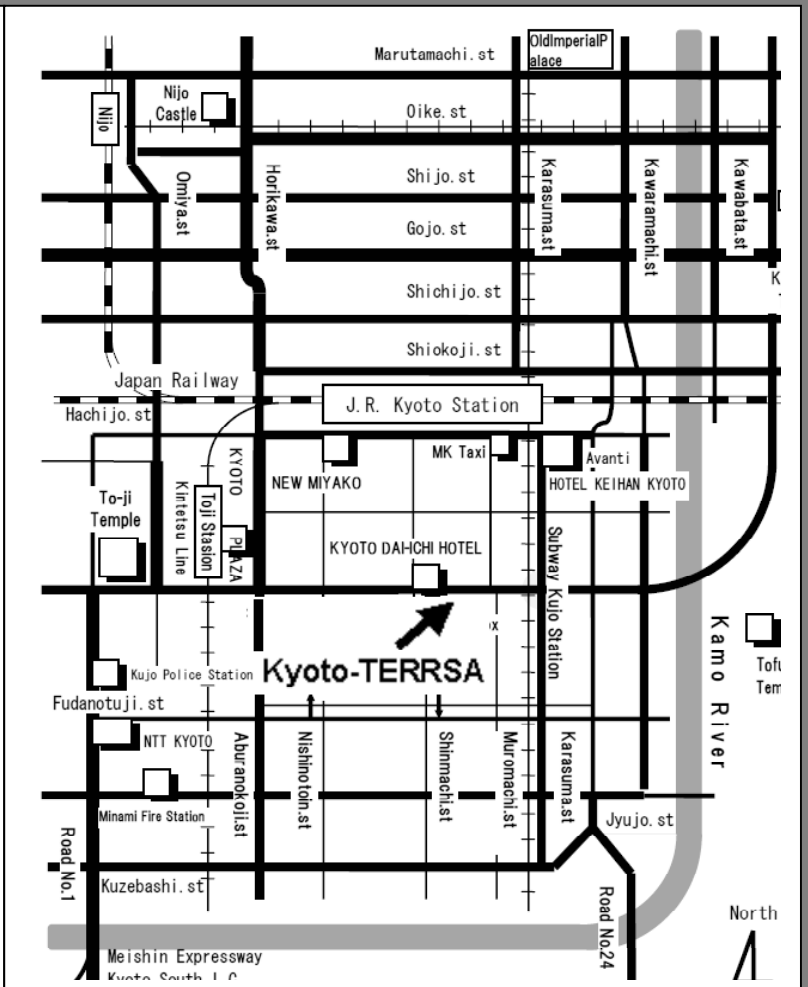
<http://kawai.city.kyoto.jp/raku/modules/english/index.php>

<http://www.city.kyoto.jp/koho/eng/index.html>

http://www.kyoto-kankou.or.jp/ssd_kyoto/frame_english.html

<http://www.kyotojoho.co.jp/english/index.html>

<http://www.kiis.or.jp/kansaida/uji/index-e.html>



If you lose way, please show
TAXI Driver following Japanese.

九条の京都テルサへ



Photo by Google Map

FREE CHARGE!